

# Haringey Summer Holiday

## Summary Report 2022

Authors: Erica Owusu- Boateng and Daniel Ball



### **Programme Summary**

The 2022 Summer Holiday delivery saw the 6<sup>th</sup> year of additional investment into the Summer Holiday Programme, as well as the 2<sup>nd</sup> year of Haringey's Holiday Activity and Food (HAF) Programme funded by Department for Education (DfE), with two years remaining of the funding ending March 2025. This led to an extensive programme rolled out across the borough, with a strong focus on children eligible for free school meals. The Community Summer Holiday Programme and HAF worked side by side providing children and young people with a range of activities to choose from.

Building on learning from previous years, feedback from young people, colleagues and residents, a broad spectrum of activities was delivered that offered something for everyone. Activities included mainstream high footfall activities such as football and basketball, as well as activities such as drama, filming, day trips, residentials and much more. These were delivered in a range of community venues as we looked to make the most of Haringey's libraries, parks and green spaces, schools, and community centres.

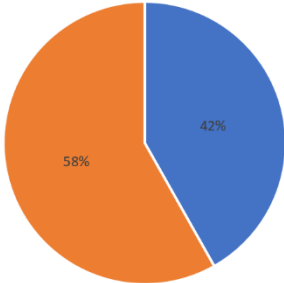
Most of the commissioned initiatives offered free access to activities, while others offer subsidised activities such as our popular £1 swimming at Haringey Leisure Centres. Targeted work also took place to offer free vouchers and sponsored holiday camp spaces for those most in need.

Throughout this report we will offer some insight into the variety of the delivery, highlights, learning, and make recommendations for future programmes.

# Achievements

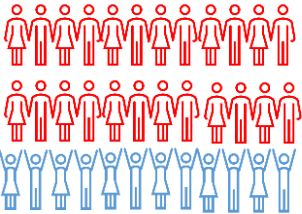


10% children recorded as SEND attended during the summer



3585 unique HAF participants

2577 unique community participants



25% of FSM cohort reached

2387 eligible attendees



189 volunteers supported summer programmes



6 early years settings funded by HAF

Total of 492 aged 0-5yrs



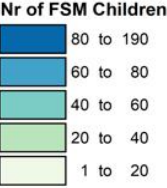
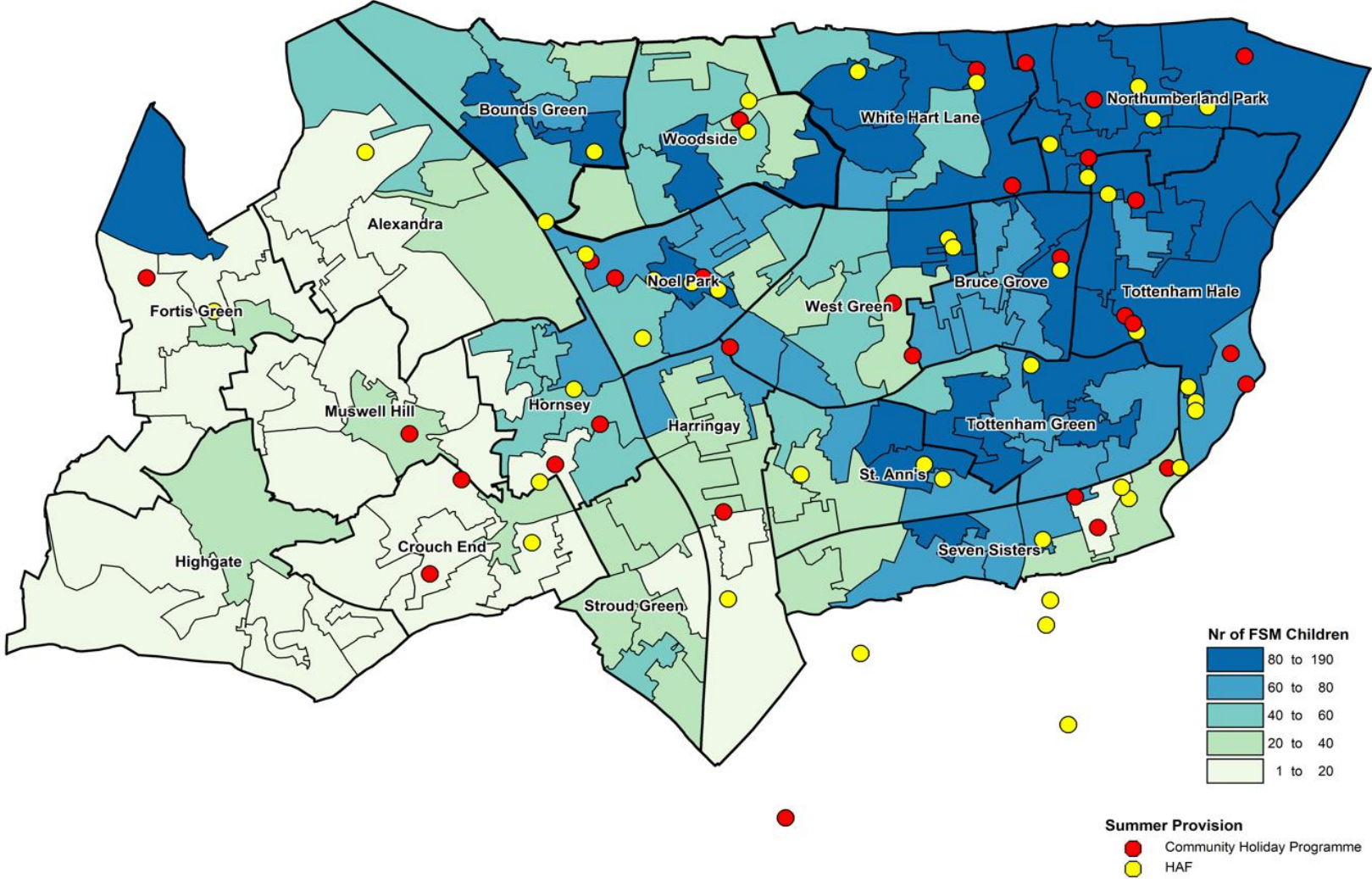
28217 hot meals served

16,717 meals cooked on sites and 11,500 meals delivered



756 subsidised swims at Haringey Leisure Centres

# Delivery Venues



## Demographic

### Postcode

- Vast majority of the Community Programme attendees were from the N17 post code.
- In the HAF programme there was a more even spread across N17, N15 and N22
- Overall, as can be expected a high proportion of attendees were from the east of the borough where FSM% is higher and the programmes are concentrated.

### Ethnicity - Community

- Black 40%
- White 16%
- White Other 21%
- Asian and other 23%

### Ethnicity - HAF

- Black 37%
- White 5%
- White Other 25%
- Asian and other 33%

### Age

- c40% of attendees to both programmes were in the 8 to 11years age group
- 33% of Community attendees were 12 to 15 years whereas in HAF the percentage was 15.5%
- The community programme attracted 20% 16+ the HAF much less (3% related to the DfE restriction)

### Gender

- While the majority of unique attendees were male (55% HAF and 62% Community), females tended to visit on a more regular basis and thus female usage/throughput is significantly higher

### Disability

- 10% attendance in the Community programme and 4.5% attendance in the HAF programme.

## Publicity

### 25,000 Booklets distributed:

Secondary Schools	2,259
Primary Schools	13,110
Leisure Centres	1,115
Community Spaces	3,250
Libraries	900
Youth Spaces	600
Children Centres	3,200
Food hubs	300
Other – Events and Ad hoc venues	266

### Online engagement

Unique Webpage Views	4,481
Unique Booklet Downloads	2,310
Peak Visits Webpage	4th, 22nd, 25th July
Peak Booklet Downloads	4th, 22nd, 25th July
Unique HAF Webpage Views	4,856



Haringey @haringeycouncil · Aug 22

From cooking spaghetti to producing music, it's fantastic to see young people from our borough smiling & doing what they enjoy as part of the Holiday Activities & Food programme-supported summer camp at the @HaringeyLP! 🍳🎧🌞 -->> [bit.ly/3c7gJ3K](https://bit.ly/3c7gJ3K) #HAF #Haringey #ThisIsAP

Haringey Learning Partnership @HaringeyLP · Aug 22

HLP's summer camp has started with a bang! We've got music being produced, spaghetti being cooked, sport being played & jewellery being designed. Thank you to @haringeycouncil #HAF for providing the funds to make this week happen. #ThisIsAP



Haringey @haringeycouncil · 23 Aug

Children & young people who are eligible for Free School Meals have been having #fun & enjoying themselves across #Haringey throughout this summer as part of our #HAF2022 programme.

Cllr @ZenaBrabazon has paid a visit to one such session at @FerryLaneN17! [bit.ly/3KgKag1](https://bit.ly/3KgKag1)



ThruLife



Haringey @haringeycouncil · Aug 13

If your child is/children are eligible for Free School Meals, there's a range of fun & FREE activities, courses & events for them to take part in throughout the summer break as part of our Holiday Activities & Food programme.

For more info -> [ow.ly/QoYh50JWsl1](https://ow.ly/QoYh50JWsl1) #HAF2022 ❤️



Haringey @haringeycouncil · Jul 23

Our #SummerHoliday #Fun booklet is full of activities, courses & events right across our borough for children & youth people in #Haringey.

From 🏀, ⚽ & 🎮 to 🍷, 🌿 & 🌻, there's something in there for everyone & all ages & abilities.

For more -> [bit.ly/2LyK2f0](https://bit.ly/2LyK2f0) 🌞



## Rising Green Youth Hub

“We really welcomed the opportunity to speak to Rise colleagues and also to see the young people so well engaged in their activities in such a safe and stimulating environment. I am sure that the new academic year will really see Rising Green playing a critical role in engaging and stimulating our young people and it was great to see such a wide age range there, from younger to older year groups and activities to keep all engaged”

## Thru Life

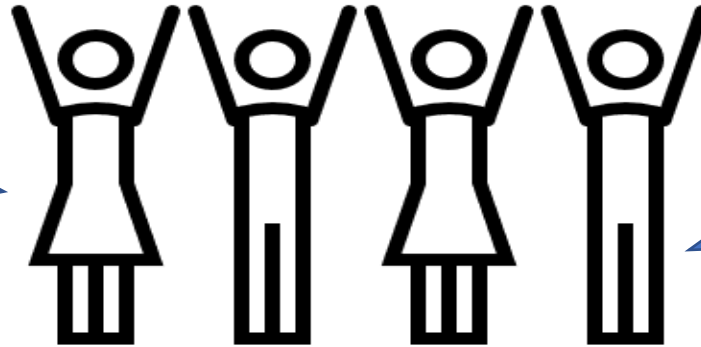
“Coach Kwame was a great ambassador for Thru Life and a really positive role model for young people who come through the Vale and into employment and community work: please pass on our thanks to him. Some of the work Thru Life talked about felt very timely in terms of the support and offer we are developing in our borough, including around serious youth 22 / 22 violence and protective factors for our young people. Thru Life’s partnership work is very wide and thoughtful and places young people at its centre, most importantly seeking to ensure positive and measurable outcomes for all those who you support. We welcome a wider discussion on this aspect of your work.”



*I'm very grateful for the activities my children took part in, because of lack of funds I couldn't afford to take my children out so these free activities were essential for my family.*

*Without the HAF funding a young person who had been recently evicted from their home, would not have been able to enjoy a hot meal each day. Additionally, with the support of the Felix Project, we were able to send this young person home with foods they could enjoy without using shared kitchen facilities.*

*Staff are always friendly and welcoming, they know my child well and make an effort to be personable. A fantastic experience.*



*My expectations were more than met, my daughter has really enjoyed this week, not only has she learnt new skills but she made friends and had*

*Without the HAF funding a young person who had been recently evicted from their home, would not have been able to enjoy a hot meal each day. Additionally, with the support of the Felix Project, we were able to send this young person home with foods they could enjoy without using shared kitchen facilities.*

*The children really enjoyed our day trips and said the trips were the biggest highlights of the summer, day trips included Paradise Wildlife Park, Bowling at Rowans and Cinema*



## **Recommendations for Future Delivery**

### **HAF**

- **More locations provide their own food to free up officer resource to concentrate on developing the wider programme**
- **Work proactively with Harris Academy Tottenham to ensure they are part of the programme**
- **Provide more support for those providers who struggle to deliver the food nutrition element effectively and in an engaging way**

### **Community**

- **For future delivery, both programmes to provide activities that attract more female participants**
- **Explore ways to maintain ongoing engagement from male participants.**
- **Streamline data collection so that it is easier for providers and less resource intensive for staff**
- **Continue our work around inclusion with current and new providers to ensure that more activities allow for disabled and non-disabled to participate together**